

Kosovo - Greening Land for the Future (Greenland) Project

Remediation and redevelopment of KEK Overburden and Infilled Mine Galleries site

March 2020

Introduction

The Ministry of Infrastructure and Environment intends to support the **‘Greening Land for the Future (Greenland) project’** with the financial support of the World Bank.

The overburden and infilled mine galleries site, largely owned by the Government of Kosovo/Kosovo Energy Corporation (KEK) was selected as a site to demonstrate international good practices for contaminated land remediation and redevelopment.

This presentation provides background information for the general public on the envisaged project.

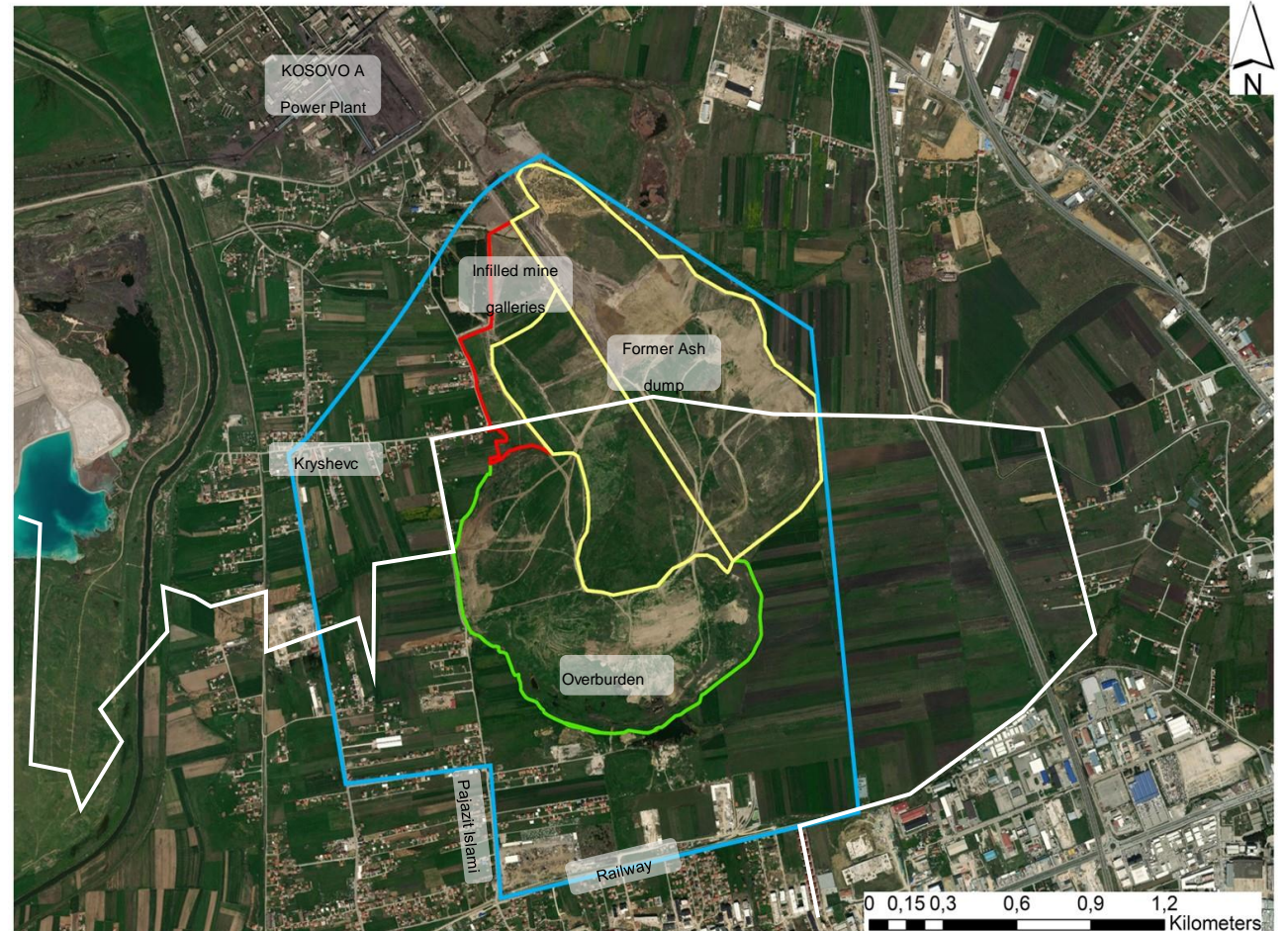


Site Location

The KEK overburden (80 hectares) and Infilled Mine Galleries site (24 hectares) is situated between the municipalities of Prishtina, Obilic and Fushe Kosova.

The site is mostly barren land, consisting of clay deposited against the former ash dump site.

Included in the project are the green and red areas in the figure. The former ash dump (yellow line) is not part of the project



Site history

As the soil and clay above the lignite of the open pit KEK mines needed to be disposed a site was selected to store this material. This so-called overburden was transported to the current. The site is now some 30 m high and consists of loose soft clay with little strength for construction.

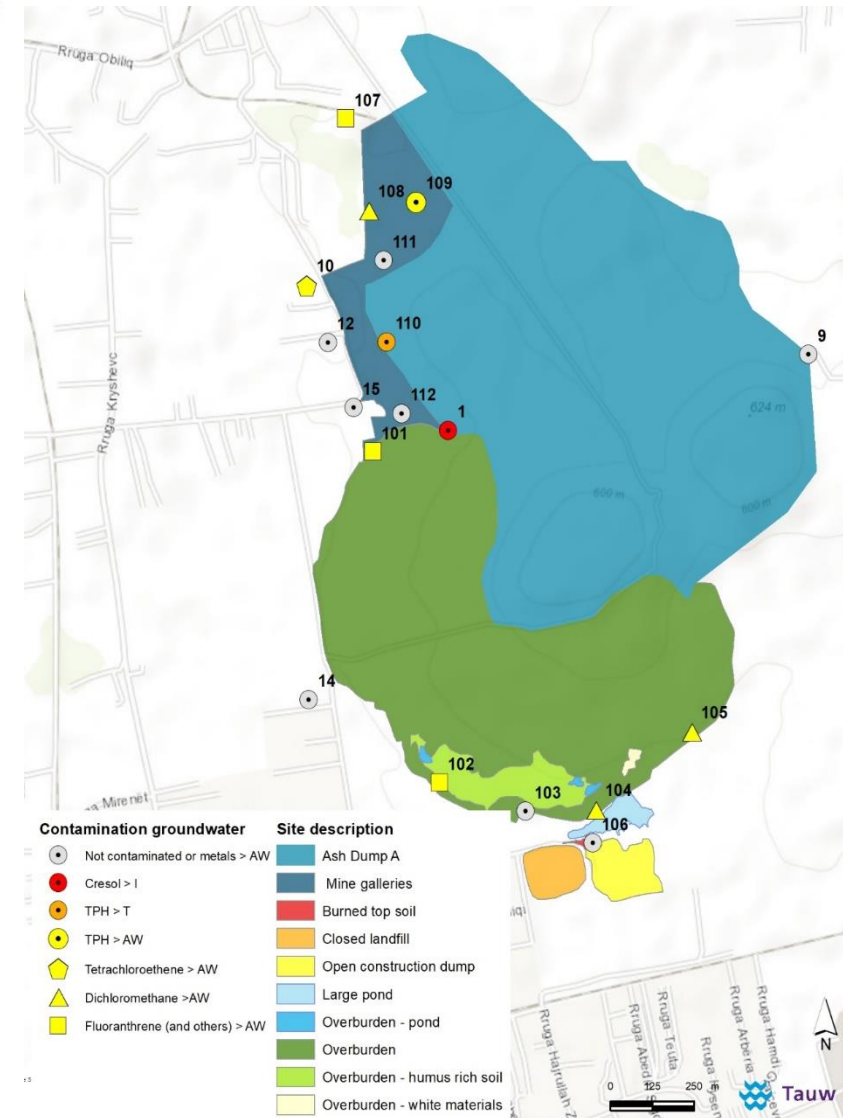
The infilled mine galleries are directly north of the overburden material. These mines are pre-WWII lignite mines that have largely collapsed. The mines have been refilled with soil and ash from the surroundings. This area is now mostly flat.



Environmental Quality

In February 2020, Tauw bv a large specialized environmental engineering firm executed a soil, ground and surface water investigation in the area. Based more than 200 points and the use of international risk models they concluded that there are no human health risks related to the overburden and infilled mine areas. Not now and not in the future situation as a park.

Some pollution is present in the groundwater, but this is limited to the direct borders with the ash dump. No pollution was found in the residential areas.



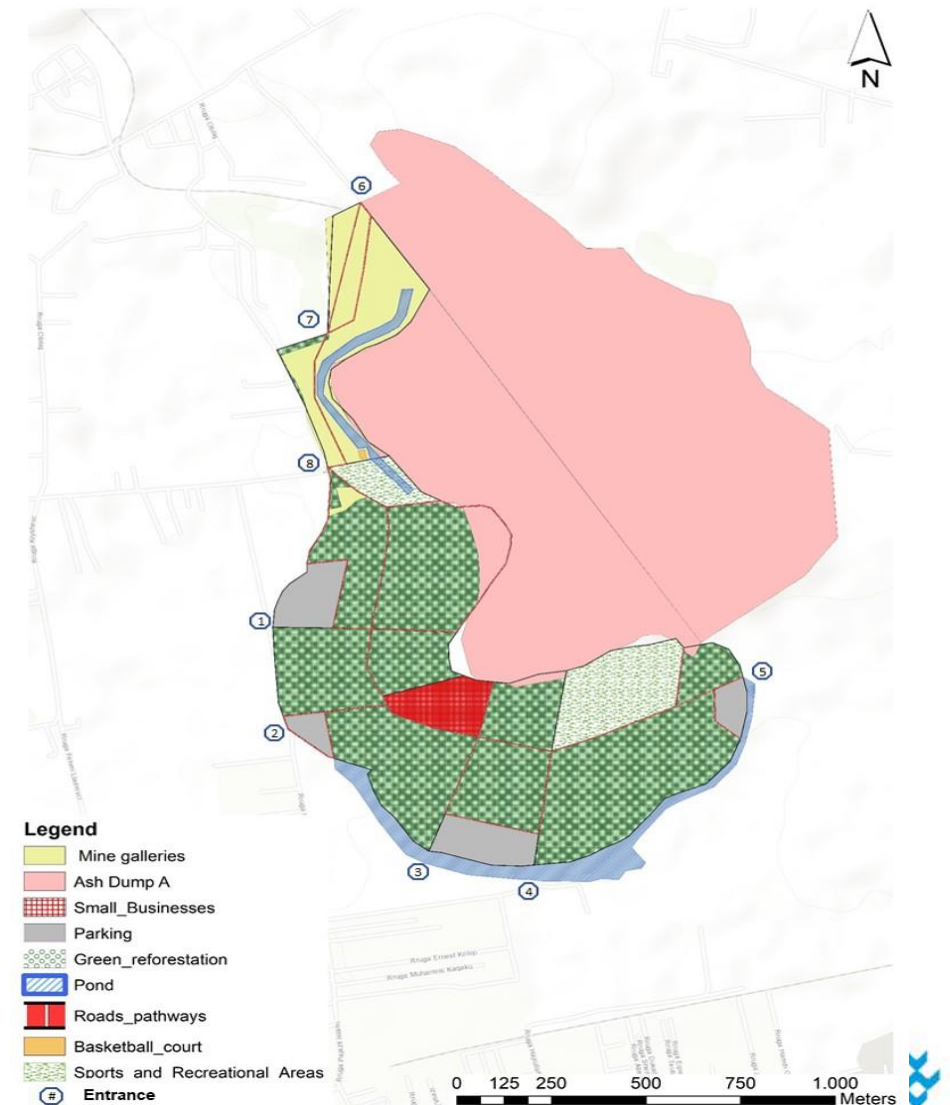
Future redevelopment

GoK wishes to redevelop the area into a public park with a tranquility concept. This park will combine remediation of the soil and groundwater with the creation of nature. Within the park leisure activities, a small-scale commercial activities are envisaged. A nature pond around the park will serve as water buffer and remediation measure for the groundwater. The park will have parking spaces for people from the vicinity to access the park. The park design is current still in the conceptual stage.

Remediation and park development will follow two phases;
Phase 1 is the infilled mine galleries

Phase 2 is the overburden site

The second phase is depends on agreement with various owners



Environmental and Social Impact Assessment

In line with WorldBank and national policies an Environmental and Social Impact and Risk Assessment (ESIA) was made for the remediation and park development. This draft ESIA can be accessed upon request.

From an Environmental perspective the main risks are during the construction phase where the use of heavy machinery for soil movement will have an Environmental Impact. Additional Environmental impact is due to the use of raw materials (sand, gravel).

During the operational phase the actual park will exhibit positive Environmental effects especially on biodiversity, groundwater and air quality. The park will use water, energy and generate some wastes, which will need to be organized.

Socially, possible land acquisition, restriction on land use, and involuntary physical and/or economic displacement require attention. This only applies to phase 2; the Overburden area.

An Environmental and Social Impact and Mitigation Plan is part of the ESIA. The plan describes how is delt with the Environmental and Social Impacts caused by the project.



Questions

If you have any questions on this project or if you wish to view the Environmental and Social Impact Assessment Summary (in Albanian) or full document (in English) please contact;

- Mr. Pëllumb Gjinolli (Environmental Expert – ECT)
 - +38345550650
 - greenlandinfo20@gmail.com
 - **Below are the websites for summary of the study**
 - [*https://mmph.rks-gov.net/*](https://mmph.rks-gov.net/)
 - [*http://kek-energy.com/kek/*](http://kek-energy.com/kek/)
 - [*https://kk.rks-gov.net/fushekosove/category/shpalljet/diskutimet-publike/*](https://kk.rks-gov.net/fushekosove/category/shpalljet/diskutimet-publike/)
 - [*https://kk.rks-gov.net/obiliq/category/konkursej-njoftimet/*](https://kk.rks-gov.net/obiliq/category/konkursej-njoftimet/)

Please send your queries before the 10th of April 2020 to allow them to be processed



Contact



Pëllumb Gjinolli



+3834550650



greenlandinfo20@gmail.com



www.tauw.com

